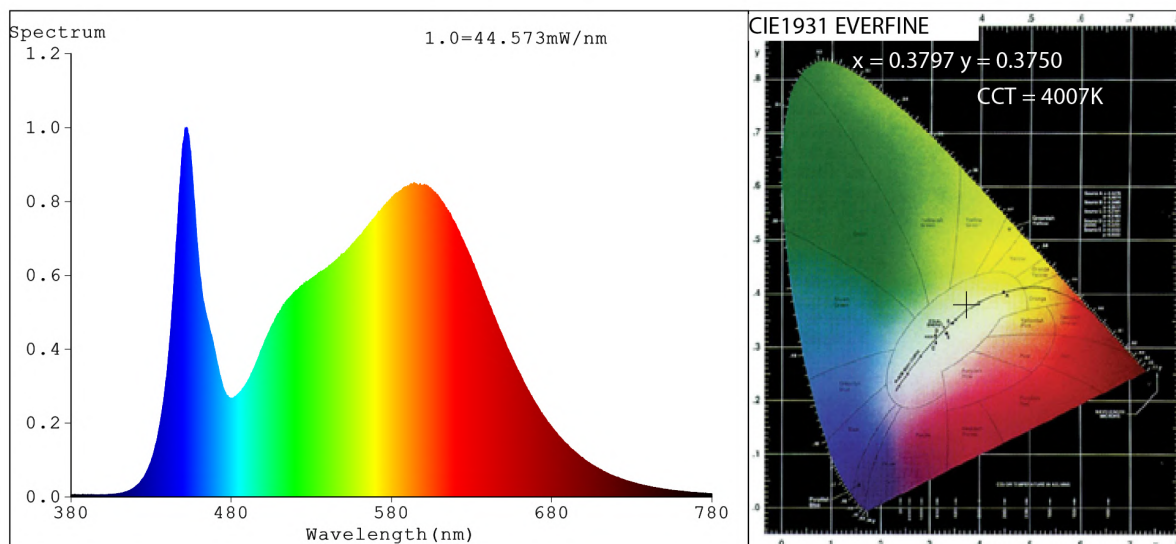


Spectrum Test Report



Color Parameters:

Chromaticity Coordinate: $x=0.3797$ $y=0.3750$ $u'=0.2253$ $v'=0.5007$

CCT=4007K (Duv=-0.0006) Dominant WL: $\lambda_d = 579.4\text{nm}$ Purity=26.5%

Ratio: R=18.6% G=77.6% B=3.8%; Peak WL: $\lambda_p = 452.2\text{nm}$ FWHM=21.1nm

Render Index: Ra=84.3 CRI=78.2 TM30: Rf=83 Rg=95

R1 =83 R2 =91 R3 =96 R4 =83 R5 =83 R6 =87 R7 =86

R8 =65 R9 =12 R10=79 R11=82 R12=64 R13=85 R14=98 R15=77

Photo Parameters:

Flux = 2157 lm Eff. : 148.93 lm/W $\Phi_e = 6.572\text{ W}$ Scotopic: 3707.7 S/P: 1.7193

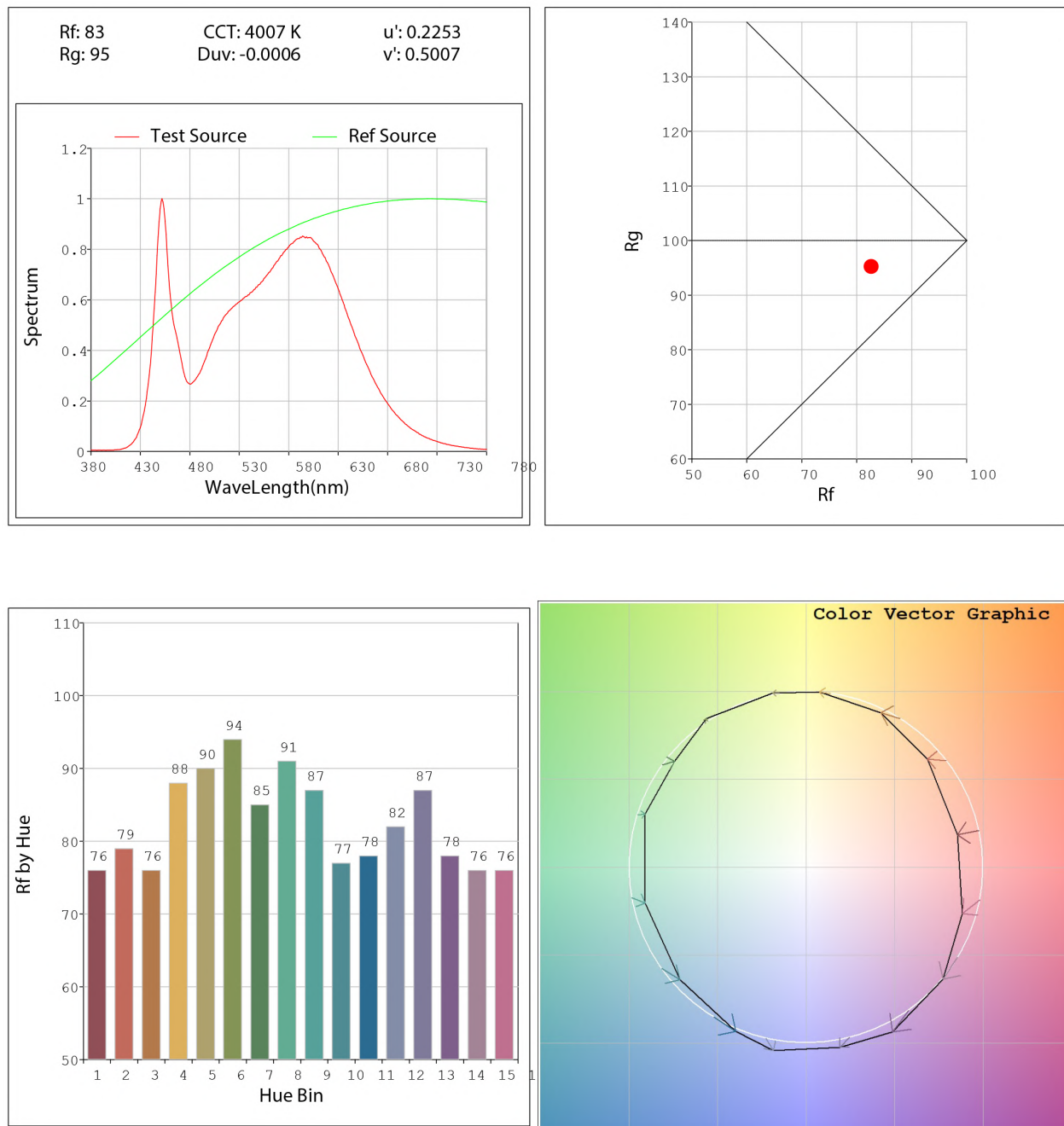
Electrical parameters:

V = 23.998 V I = 0.6034 A P = 14.48 W PF = 1.000

Status: Integral T = 624 ms $I_p = 48893$ (75%)

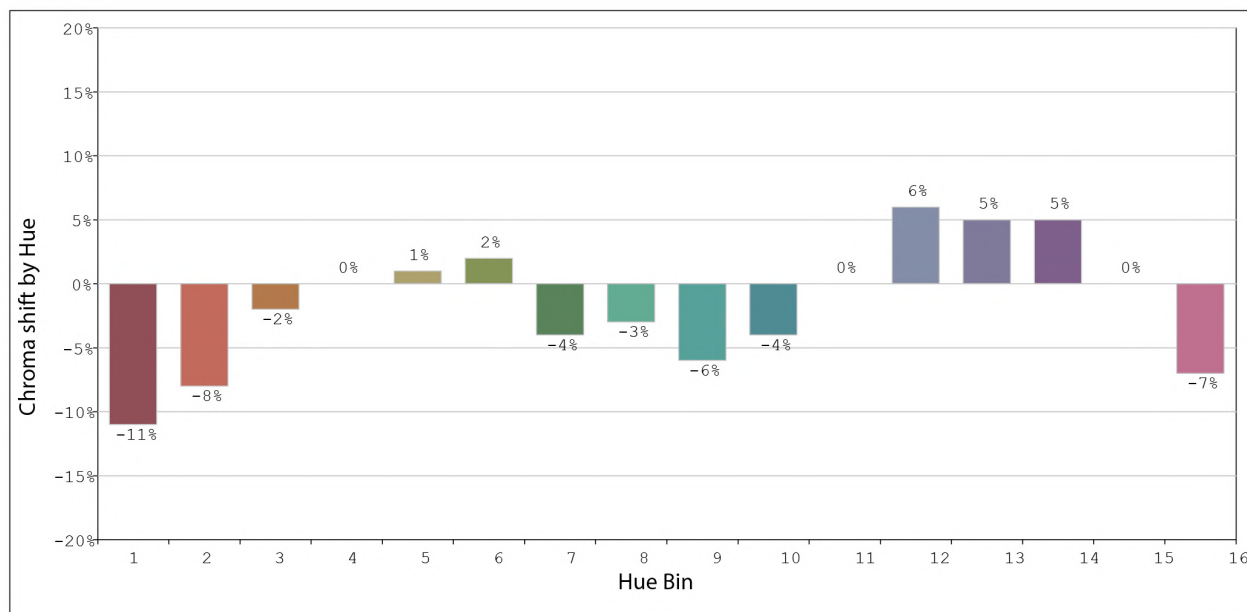
Model: Ecoled Élite 15 4000K
 Tester: Sergio Carneros
 Temperature: 25Deg
 Manufacturer: Luz Negra S.L.

Number: 31.012
 Date: 2023-09-13 16:32:29
 Humidity: 57%
 Remarks: 100cm de tira flexible



Model:Ecoled Élite 15 4000K
 Tester:Sergio Carneros
 Temperature:25Deg
 Manufacturer:Luz Negra S.L.

Number: 31.012
 Date:2023-09-13 16:32:29
 Humidity:57%
 Remarks:100cm de tira flexible



			Graphic shift(%)	
Hue Bin	Hue Angle	Rf	Chroma	Hue
1	0.0° - 22.5°	76	-11	0
2	22.5° - 45.0°	79	-8	7
3	45.0° - 67.5°	76	-2	11
4	67.5° - 90.0°	88	0	6
5	90.0° - 112.5°	90	1	3
6	112.5° - 135.0°	94	2	-1
7	135.0° - 157.5°	85	-4	-5
8	157.5° - 180.0°	91	-3	0
9	180.0° - 202.5°	87	-6	4
10	202.5° - 225.0°	77	-4	11
11	225.0° - 247.5°	78	0	15
12	247.5° - 270.0°	82	6	6
13	270.0° - 292.5°	87	5	-5
14	292.5° - 315.0°	78	5	-13
15	315.0° - 337.5°	76	0	-14
16	337.5° - 360.0°	76	-7	-9

Model:Ecoled Élite 15 4000K
Tester:Sergio Carneros
Temperature:25Deg
Manufacturer:Luz Negra S.L.

Number: 31.012
Date:2023-09-13 16:32:29
Humidity:57%
Remarks:100cm de tira flexible